



EXPLORING BOTSWANA

3 nights Grasslands Bushman Lodge
3 nights Oddballs' Enclave
3 nights Camp Savuti

FOOTSTEPS IN
AFRICA 



Package (9 nights)

3 Nights Grasslands Bushman

Lodge 3 Nights Oddballs' Enclave

3 Nights Camp Savuti

The Highlights:

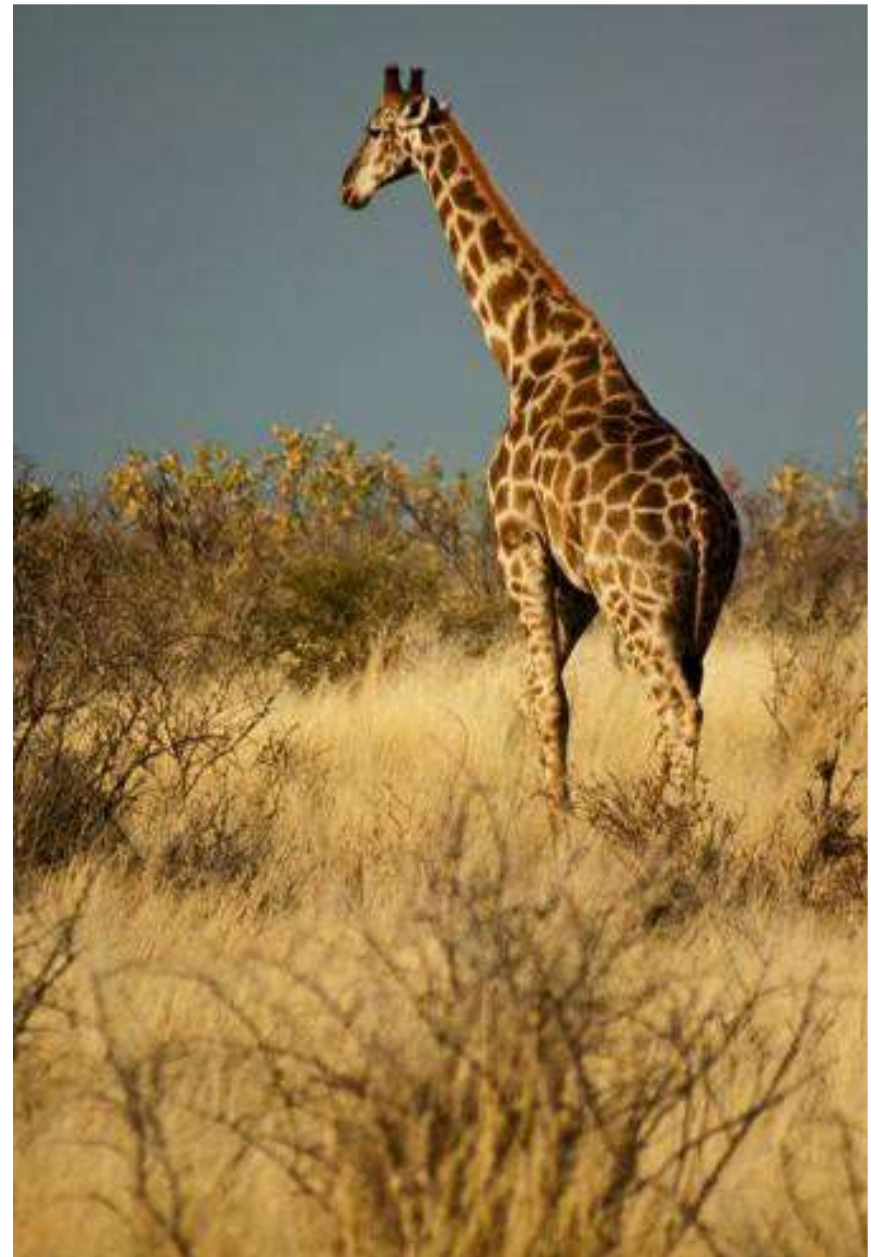
Foraging with the San Bushmen

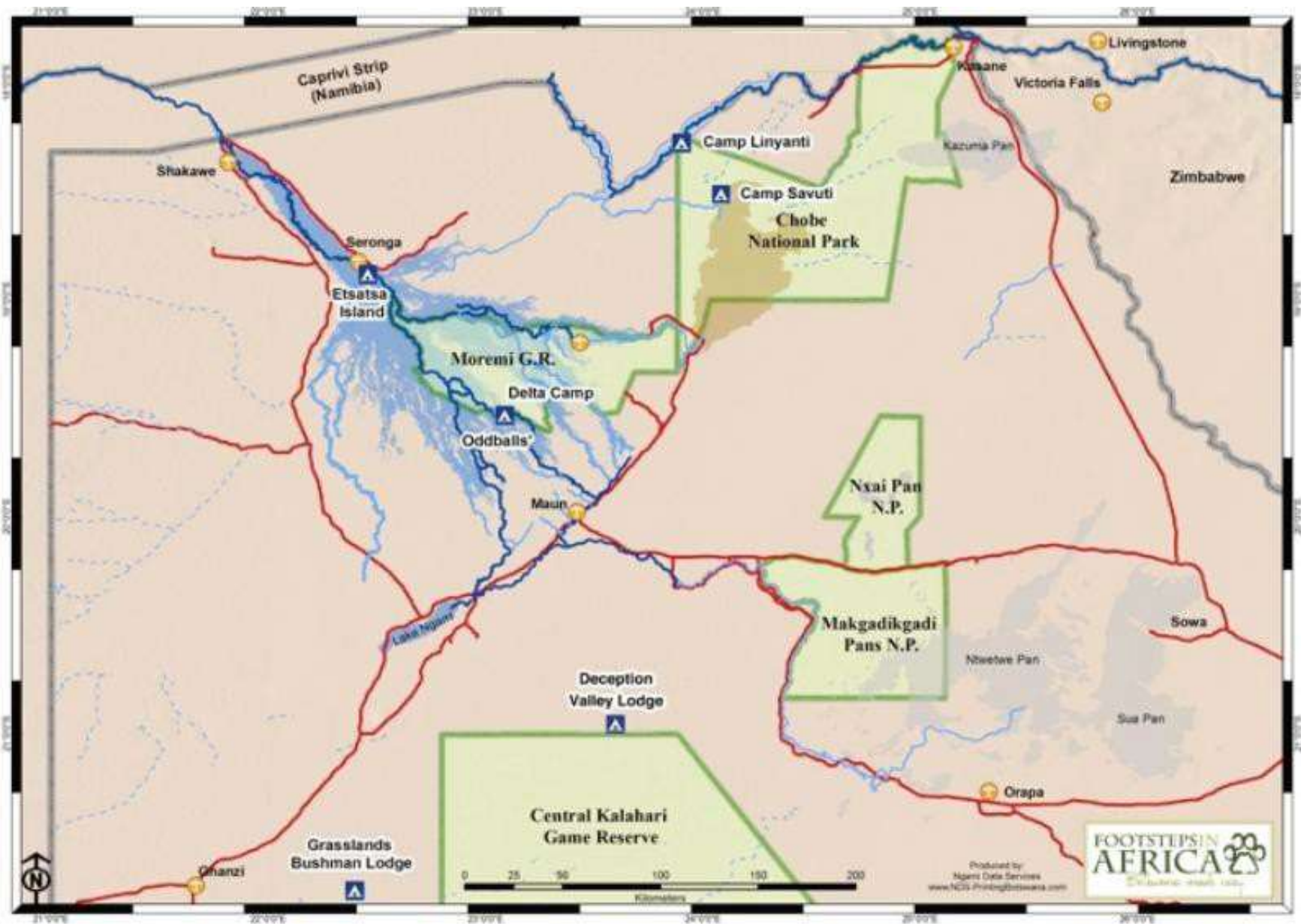
Predator project at Grasslands

Private guided activities at Oddballs' Enclave

Guided walking on Chief's Island

Mokoro through the Okavango Delta





Day one:

Upon arrival in Maun you will be met by Delta Air who will assist you to the light aircraft and onwards air transfer to Grasslands Bushman Lodge.

Grasslands Bushman Lodge is situated to the west of the Central Kalahari Game Reserve on a private wildlife reserve of some 15,000 hectares.

The Central Kalahari has been the home of the De Graaf family for seven generations – since Cecil John Rhodes, eager to create a buffer between his interests in central Africa and German settlers encroaching from the west, granted vast swathes of the Kalahari to Boer ranchers. The Germans duly arrived and faced with the task of stopping their westward migration, the Boers brought out their daughters. Mission accomplished! With the courtliness and hospitality peculiar to people living in deep solitude, they love to share their passion and first-hand knowledge of the Kalahari with their guests.

The lodge is family owned and some of the staff are from a clan of San Bushmen that has lived and worked alongside the family for many generations.

The lodge accommodates up to 16 guests and includes two family rooms. The lodge is traditionally decorated and has a swimming pool for the hot desert days.

The guest areas overlook a floodlit waterhole which attracts a large variety of wildlife during the day and night. Accommodation is in comfortable, en-suite thatched chalets.

At Grasslands Bushman Lodge, the focus is on four main activities:

- An authentic, comprehensive San (Bushmen) experience including foraging with an entire clan and learning how they used to live in the desert.
- Day and afternoon drives
- The unique predator rehabilitation centre.
- Horse-riding – for those who fancy a wild ride in a wild country.

Spend three nights at Grassland Bushman Lodge



Day Four:

After breakfast at Grassland Bushman Lodge, you will depart by light aircraft to Oddballs' Enclave.

The Enclave is on a small island just off the south-western edge of Chief's Island, deep in the heart of the Okavango, and bordering Moremi Game Reserve.

The camp is accessible only by light aircraft. On arrival, you will be met at the airstrip and welcomed to the island by your private guide, who will remain your guide for the duration of your stay.

Oddballs' Enclave accommodates a maximum of 10 guests, in five twin or double bedded mini-Meru tents, making it a classic and intimate camp. The tents are on elevated wooden decks, each with a semi-detached private bathroom with hot and cold running water and an al fresco bucket shower.

The guest areas have a variety of comfortable seating and a raised viewing deck overlooks the sweep of the Delta – the perfect place to watch the sun or moon rise and view whatever wildlife may be visiting. Meals are enjoyed on the deck with spectacular views across the floodplains to distant island forests.

The Enclave offers only walking and mekoro (s. mokoro), the traditional dug-out canoe of the swamps. Your private guide (maximum of two guests per guide) was born and raised in the area. He owns his mokoro (the genuine wooden article, no plastic replicas for us) and will take you out on it in the early mornings and afternoons, to nearby islands where he will walk with you to view game and the spectacular landscape that is the Okavango. On request, the camp will pack a picnic lunch for you, allowing you to stay out the whole day.

Walking unarmed amongst the full range of Africa's wildlife is an experience that will live with you for a long time. Your guide is intimate with this landscape, and his knowledge of the big and little things that comprise it will astound you.

Spend three nights at Oddballs' Enclave



Day Seven:

After breakfast at Oddballs' Enclave, you will depart by light aircraft to Camp Savuti. Camp Savuti is a 20 minute game drive from the Savuti airstrip in Chobe National Park.

The Savuti Marsh, fed by the Savuti Channel, has developed a reputation over the years as one of the world's premier predator viewing areas, boasting one of the highest concentrations of wildlife on the African continent. A number of award-winning documentary films shot in Savuti have cemented its reputation.

The Channel, dry since 1982, started flowing again in 2010 and is now once again flooding the Marsh, an area of sweet grasses that attracts herbivores of every description and, this being Africa, their attendant predators.

Camp Savuti is a small, intimate camp of 5 Meru tents accommodating a maximum of 10 guests in comfort and style. The tents have been positioned to ensure privacy and a modest level of exclusivity throughout the camp. Each tent sits on a platform, with views over the Savuti Channel. The tents are large and spacious with en-suite facilities and views from your deck.

In the guest areas, there is a comfortable and intimate lounge, bar and dining area, all overlooking the Savuti Channel.

The activities on offer are morning and afternoon game drives through the park and along the fringes of the Channel and Marsh. The game-viewing vehicles are open to facilitate game-watching and photography, and your guide will delight in showing you the beauty and diversity of Savuti's natural wonders. This area offers superb game and birding-viewing in the open areas of Savuti within Chobe National Park.

Spend three nights at Camp Savuti

Day Nine:

Enjoy an early morning safari, after which breakfast is served. Depart Camp Savuti via light aircraft to Maun for your onward journey.

